

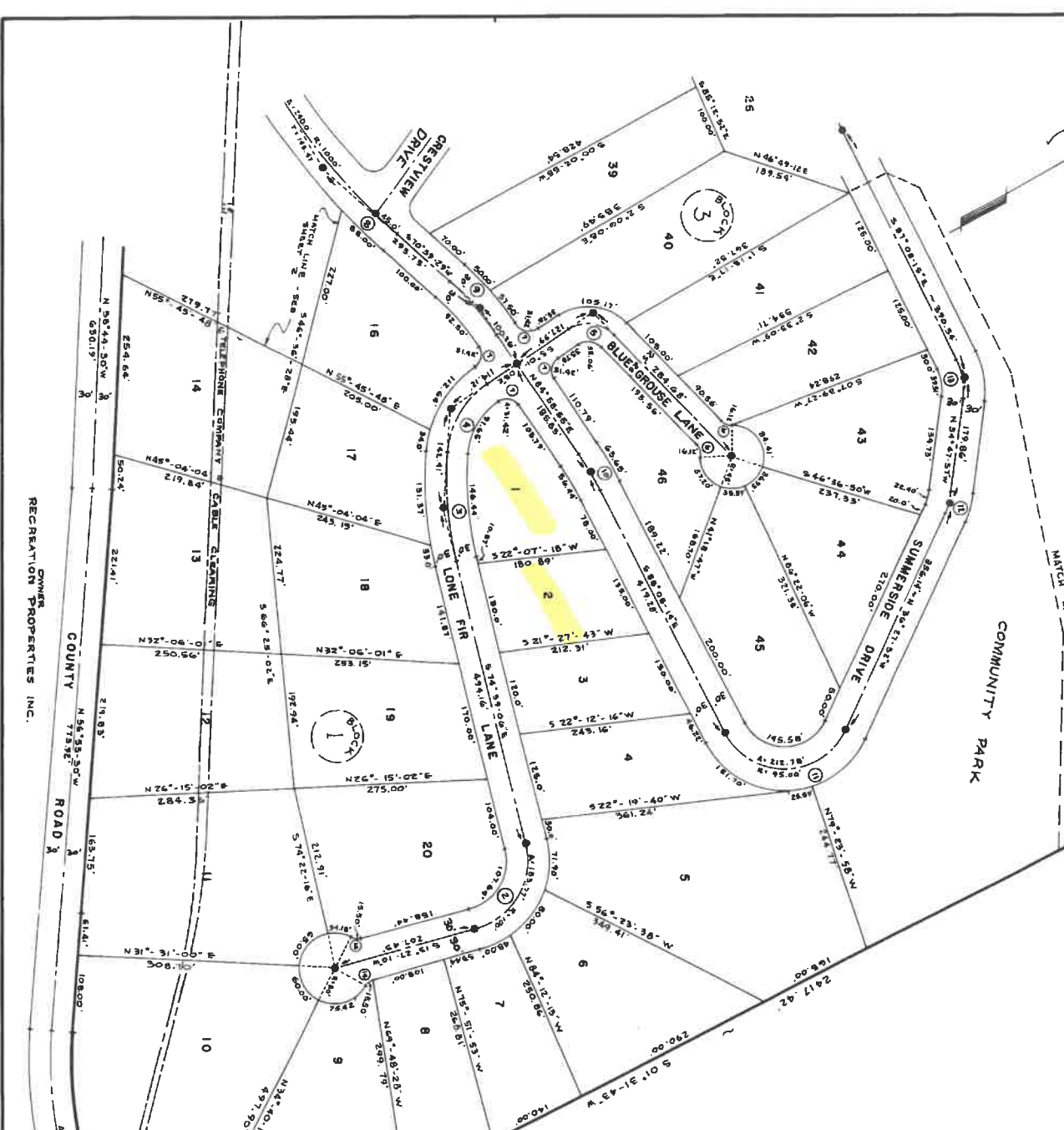
SUMMERSIDE

A PORTION OF NE1/4 OF SECTION 1,
TWP19N, RANGE14E, W.M.
KITITAS COUNTY, WASH.
SCALE 1" = 100'

Receiving No. 500509

CURVE DATA

1	Δ: 38°30'-30"	R: 150.00'	L: 100.00'
2	Δ: 85°00'-16"	R: 100.00'	L: 100.00'
3	Δ: 17°07'-24"	R: 150.00'	L: 100.00'
4	Δ: 52°30'-38"	R: 150.00'	L: 100.00'
5	Δ: 60°20'-27"	R: 150.00'	L: 100.00'
6	Δ: 45°11'-18"	R: 150.00'	L: 100.00'
7	Δ: 14°19'-22"	R: 150.00'	L: 100.00'
8	Δ: 14°11'-28"	R: 150.00'	L: 100.00'
9	Δ: 6°52'-51"	R: 150.00'	L: 100.00'
10	Δ: 128°19'-28"	R: 150.00'	L: 100.00'
11	Δ: 18°20'-05"	R: 150.00'	L: 100.00'
12	Δ: 18°20'-05"	R: 150.00'	L: 100.00'
13	Δ: 32°20'-18"	R: 150.00'	L: 100.00'
14	Δ: 44°24'-55"	R: 150.00'	L: 100.00'
15	Δ: 85°00'-16"	R: 100.00'	L: 100.00'



J. J. SLEAVIN & ASSOCIATES
ENGINEERS-SURVEYORS
1125 TACOMA AVE. 50 - PU 31706
TACOMA 2, WASH.
14-61 B